

Anolis lizards of Centro Científico Río Palenque (Los Ríos, Ecuador) 2012.0

By Steven Poe, University of New Mexico

Photos by Tom Kennedy, Poe, Levi Gray, Ian Latella, Eric Schaad; lizards collected by Poe, Gray, Latella, Schaad and Fernando Ayala

Abbreviations: RP=Rio Palenque, m=male, f=female, SVL= maximum snout to vent length in millimeters. Abundance comments reflect relative frequency of encounter in approximately 5 nights of searching by the Poe lab and Ayala. "very common" = several found/evening in RP; "moderately common"=1-5 individuals found/ evening in RP; "rare"=1-3 found total. Three species (*lynchi*, *parilis*, *chloris*) were found by us only outside RP but are likely to be present in RP.

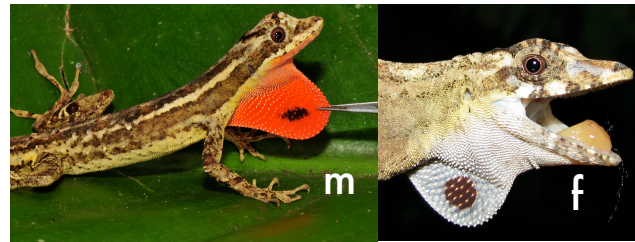
Thanks to Freddy Villao for allowing our work in RP. Funding was provided by NSF grant DEB-0844624 to Poe, and Secretaría Nacional de Ciencia y Tecnología del Ecuador PIC-08-0000470 to Omar Torres. Specimens were collected under permit No. 008-09 IC-FAU-DNB/MA issued by Ministerio del Ambiente del Ecuador.



A. gracilipes SVL 61; f dewlap usually absent; greenish-yellow on throat; moderately common. *A. gracilipes* differs from *lynchi* and *maculiventris* by its greenish-yellow throat color (pale or brown in these species), and from *maculiventris*, *peraccae* and *festae* by keeled ventral scales (smooth in these species) and much longer hindlimbs (shorter in these species).



A. festae SVL 55; f dewlap usually absent; iris usually blue; rare in forest, very common in disturbed areas. Differs from *lynchi* and *maculiventris* in its blue iris (brown in these species), from *gracilipes* in its smooth ventral scales (keeled in *gracilipes*). See *peraccae* writeup for comparison to that species



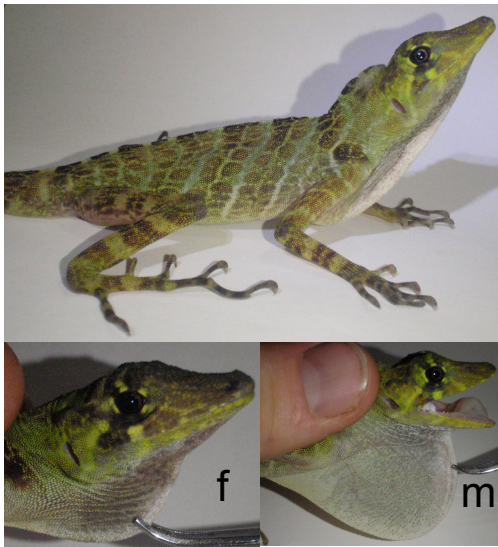
A. lyra SVL 77; iris brown; moderately common. Both males and females of *lyra* may be distinguished from other RP *Anolis* by their unique dewlaps.



A. peraccae SVL 52; f dewlap usually absent; iris usually blue; very common. Males of *peraccae* and *festae* are distinguishable by dewlap shape and pattern (elongate with black basal spot in *festae*; deep and pale in *peraccae*). Females of *peraccae* are predominately brown whereas females of *festae* are olive. We found *festae* in open trashy habitat and *peraccae* in forest. *A. peraccae* differs from *maculiventris* and *lynchi* in its blue iris (brown in these species), from *gracilipes* in its smooth ventral scales and short hindlimbs (keeled ventrals, long hindlimbs in *gracilipes*).



A. fasciatus SVL 72; m dewlap white, f dewlap absent; iris blue; rare. Differs from other large green species (*chloris*, *biporcatus*, *princeps*, *parilis*) in its blue iris. Differs from *festae* by larger size (72, vs. 55 in *festae*).



A. princeps SVL 117; iris brown; very common. Differs from *fasciatus*, *peraccae*, and *festae* in iris color (blue in these species), from *biporcatus* and *chloris* in its smooth ventral scales (keeled in these species), from *parilis* in toepad structure (pad greatly expanded in *princeps*, ~absent in *parilis*). *A. princeps* is the only 'giant' (SVL 100+) *Anolis* in RP.



A. biporcatus SVL 78; iris brown; rare in RP, common elsewhere. Both males and females of *biporcatus* may be distinguished from other RP *Anolis* by their unique dewlaps.



A. maculiventris SVL 49; f dewlap usually absent; iris brown; very common. *A. maculiventris* differs from *lynchi* in size (SVL 62 in *lynchi*) and pattern (white lateral stripe in *lynchi* absent in *maculiventris*), from *gracilipes* in its smooth ventral scales (keeled in *gracilipes*), from *peraccae* and *festae* in iris color (blue in these species).



A. chloris SVL 62; iris brown; f dewlap absent. Differs from all RP *Anolis* except *biporcatus* in being nearly patternless green. Differs from *biporcatus* in male and female dewlap size and pattern.



A. lynchi SVL 62; m dewlap orange, f dewlap usually absent; iris red-brown. *A. lynchi* differs from *gracilipes* and *peraccae* in size of head scales (small, 16-29 scales across snout in *lynchi*; larger, 8-17 across snout in *gracilipes/peraccae*), and ecology (semiaquatic in *lynchi*). Differs from *maculiventris* in presence of a white lateral stripe (absent in *maculiventris*). *A. lynchi* has much smaller head scales than any other RP *Anolis*, and is the only RP *Anolis* that is semiaquatic.



A. parilis SVL 82+; iris brown; m dewlap probably white with yellow, f dewlap probably greenish; toepads indistinct.

A. parilis is the only RP *Anolis* that lacks expanded toepads.

