

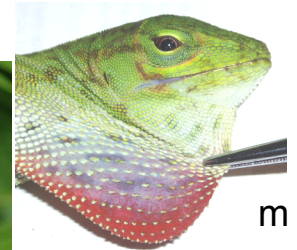
# *Anolis* lizards of Parque Omar Torrijos (El Copé) Panama 2016.0

By Steven Poe, University of New Mexico

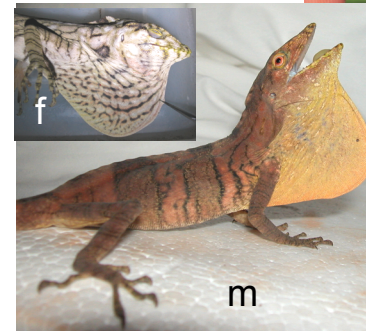
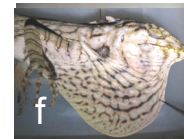
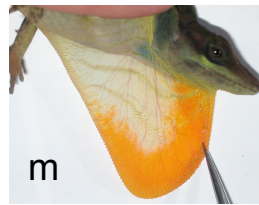
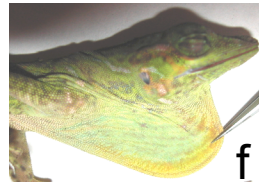
m = male, f = female, SVL = maximum snout to vent length (mm), V = ventral scales, TOE = anterior extent of tip of longest toe when hindlimb is adpressed forward along body, nf = not found by Poe lab on trails near field house but found near park. Funding provided by National Science Foundation DEB-0844624.



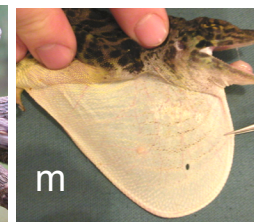
*A. biporcatus* SVL 90; V keeled; TOE to ear; photos by Tom Kennedy



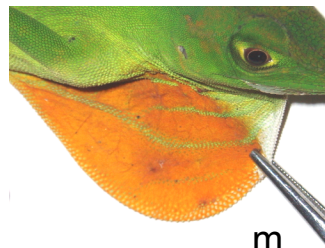
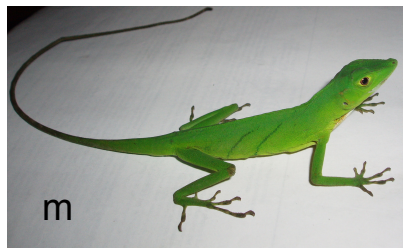
*A. kunayalae* SVL 105; V smooth; TOE between ear and eye; unusual 4th toe: large claw, narrow indistinct toepad



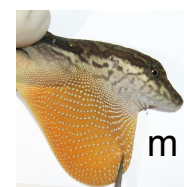
*A. brooksi* SVL 176; V smooth; TOE between shoulder and ear; body color variable: green, gray, and/or brown



*A. frenatus* SVL 140; V smooth; TOE to eye; f dewlap like male but smaller; lateral ocelli



*A. ibanezi* SVL 85; V smooth; TOE anterior to eye; f dewlap greenish; thin black lateral bands



*A. lionotus* SVL 75; V smooth; TOE to ear; f dewlap absent; semiaquatic: lives near/in streams

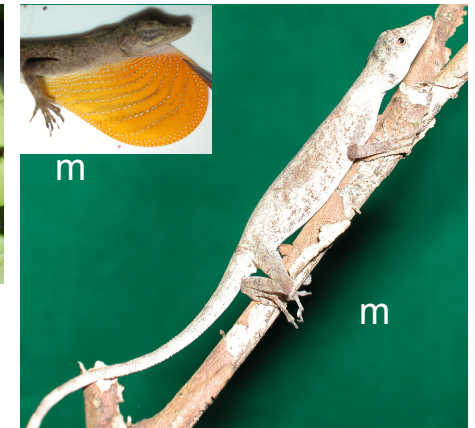




*A. humilis* SVL 45; V keeled; TOE anterior to eye; f dewlap absent; deep axillary pocket; terrestrial



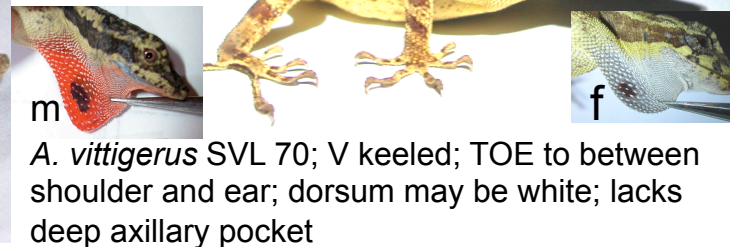
*A. capito* SVL 100; V keeled; TOE to tip of snout; enlarged flat smooth dorsal scales



*A. elcopeensis* SVL 40; V smooth; TOE to ear; f dewlap usually absent



*A. pentaprin* SVL 80; V smooth; TOE to shoulder; f dewlap like male but smaller; nf



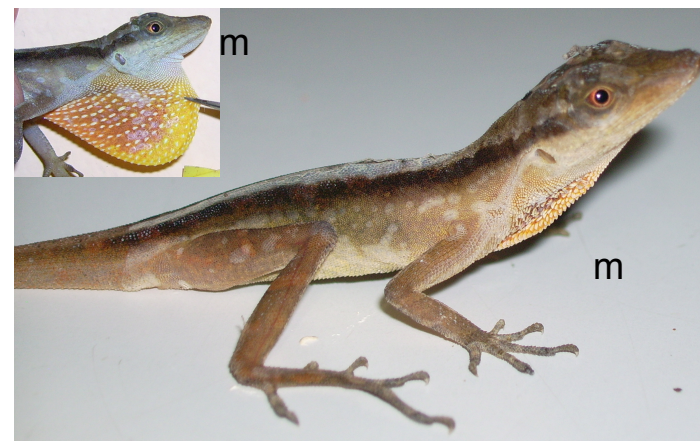
*A. vittigerus* SVL 70; V keeled; TOE to between shoulder and ear; dorsum may be white; lacks deep axillary pocket



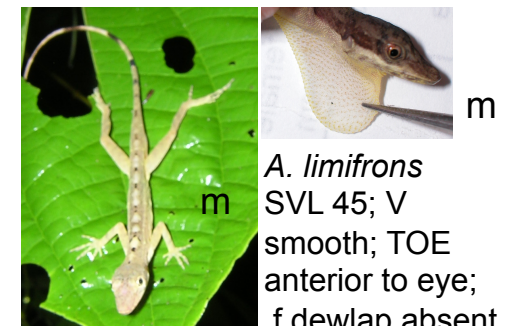
*A. auratus* SVL 55; V keeled; TOE to anterior of eye; f dewlap absent; abruptly enlarged middorsal rows of scales; open grassy areas; nf



*A. carpenteri* SVL 45; V smooth; TOE to ear; f dewlap absent; Pacific slope in dense forest; green; nf



*A. gagei* SVL 55; V keeled; TOE anterior to eye; f dewlap absent; low on vegetation; nf



*A. limifrons* SVL 45; V smooth; TOE anterior to eye; f dewlap absent